

Malvern Court	London, SW7	
Tenure:	Long lease (105 years)	
Total Area:	1414 sq ft	131.36 sq m
Parking:	Resident Parking	
Gardens	Outside Space	
Asking price	£2,850,000	

The apartment has been modernised to an extremely high standard with a contemporary finish and features a superb reception room and plenty of natural light throughout. Of particular interest are the high quality fixtures and fittings, plus the well-appointed master bedroom with large en-suite shower room and additional fitted storage. In addition, there is an eat-in kitchen and second double bedroom suite. A fantastic lateral apartment with excellent aspects that will make ideal family accommodation.



Accommodation Comprises:

- Smart communal entrance
- Porter
- Lift
- Entrance hall
- Reception room with dining area
- Kitchen with breakfast room and service entrance
- Master bedroom with en-suite shower room
- Second double bedroom with en-suite bathroom
- Third small double
- Family bathroom and qualification for RBKC parking permits.





Malvern Court
Onslow square, SW7
Approximate Gross Internal Area
1414 sq ft / 131.36 sq m

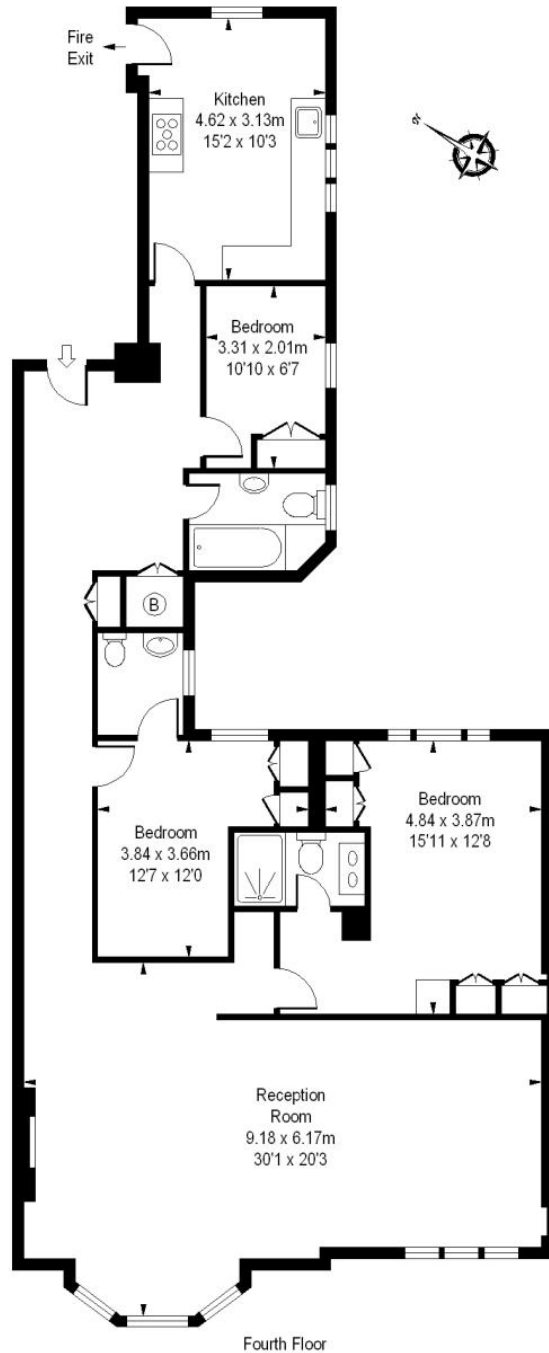


ILLUSTRATION FOR IDENTIFICATION PURPOSES ONLY

ALL MEASUREMENTS ARE MAXIMUM, AND INCLUDE WINDOW BAYS AND WARDROBES WHERE APPLICABLE
THIS PLAN MUST NOT BE REPRODUCED BY ANY OTHER PERSON WITHOUT PERMISSION